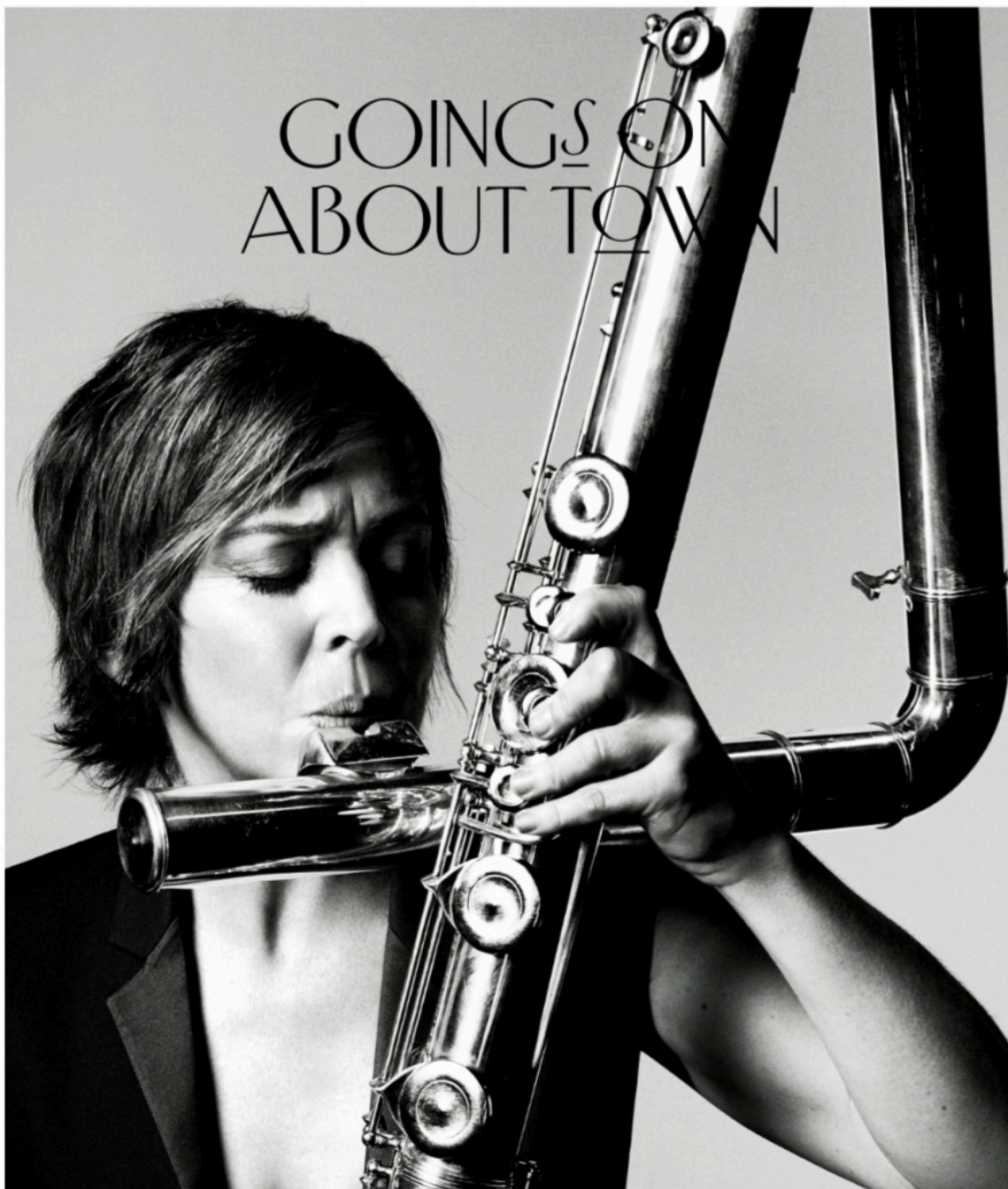




October 5, 2015



SEPT/OCT 2015 WEDNESDAY 30TH THURSDAY 1ST FRIDAY 2ND SATURDAY 3RD SUNDAY 4TH MONDAY 5TH TUESDAY 6TH

AS THE FOUNDER, co-artistic director, and burning heart and soul of the International Contemporary Ensemble, the flutist Claire Chase is a model for a new generation of American classical musicians—her career embodies entrepreneurship, technical virtuosity, and performance charisma. Chase is also quite serious about leaving a legacy: she is now into year three of “Density 2036,” a twenty-two-year project to commission new works to mark the centenary of Edgard Varèse’s 1936 piece, “Density 21.5,” a bulwark of the solo-flute repertory. Her three-part engagement at the Kitchen (Sept. 29-Oct. 2) brings back music from the first two years of the project, by such composers as Philip Glass and George Lewis, with brand-new pieces on the final night by Jason Eckardt, Dai Fujikura, and the legendary Pauline Oliveros.

THE THEATRE
MOVIES | DANCE
CLASSICAL MUSIC | NIGHT LIFE
ART | ABOVE & BEYOND
FOOD & DRINK

PHOTOGRAPH BY PARI DUKOVIC